



USES AND
RACOMMENDS



www.tmracing.it

TM Racing SpA - Via Fano, 6
61122 Pesaro - ITALY
Phone: +39 0721 25113

2T85MX21-M

MOTORE
ENGINE

18/02/2022



INFORMAZIONI GENERALI

Il presente catalogo serve per richiedere con esattezza le parti di ricambio.

Nelle ordinazioni indicare:

1) Il numero di matricola del Telaio che è stampigliato sul lato destro del canotto di sterzo. Nei modelli EN, SMR, SMR il numero di matricola è riportato anche su una targhetta posta sul lato sinistro (Vedi foto).

2) il numero di serie del Motore. E' posto sulla sinistra del motore tra la leva cambio e i coperchio accensione (Vedi foto).

3) Il codice dei particolari seguito dalla descrizione.

4) Il colore per i pezzi verniciati o comunque colorati.

Le indicazioni destra e sinistra si riferiscono ai lati del veicolo rispetto al senso di marcia.

Foto e disegni sono solo a scopo informativo e potrebbero non corrispondere esattamente alle caratteristiche dei prodotti.

GENERAL INFORMATION

The present spare parts catalogue enables one to order exactly the right spare part.

When ordering specify:

1) The frame serial number. It is embossed on the right side of the steering metal tube. In the EN, SMR and SMR models, the serial number is also stated on a plate positioned on the left hand side (See photo).

2) The engine serial numer. It is located on the left side of the engine between the gear lever and the ignition cover (See photo).

3) The part's code number followed but its description.

4) Indicate colour for painted or colored parts.

References to right and left apply to the vehicle in terms of its direction of movement.

Photos and drawings are for informational purposes only and may not exactly match the characteristics of the products.

NOTE – LEGENDA

MY

NOVITA' INTRODOTTA DIFFERENTE O NON PRESENTE NEL MODELLO DELL'ANNO PRECEDENTE

PART DIFFERENT OR NOT PRESENT IN THE REVIOUS YEAR MODEL

5M

MOTORE CON CAMBIO A 5 MARCE
ENGINE WITH 5 GEARS SPEED

6M

MOTORE CON CAMBIO A 6 MARCE
ENGINE WITH 6 GEARS SPEED

KS

MOTORE CON SOLO KICK STARTER
ENGINE WITH KICK STARTER ONLY

ES

MOTORE CON AVVIAMENTO ELETTRICO
ENGINE WITH ELECTRIC STARTER

X

RICAMBIO NON DISPONIBILE ALLA VENDITA
PART CAN NOT BE SOLD SEPARATELY



Le illustrazioni riportate in questo manuale sono fornite solo come riferimento e possono variare dal prodotto effettivo,

Dati indicativi soggetti a modifiche senza impegno di preavviso.

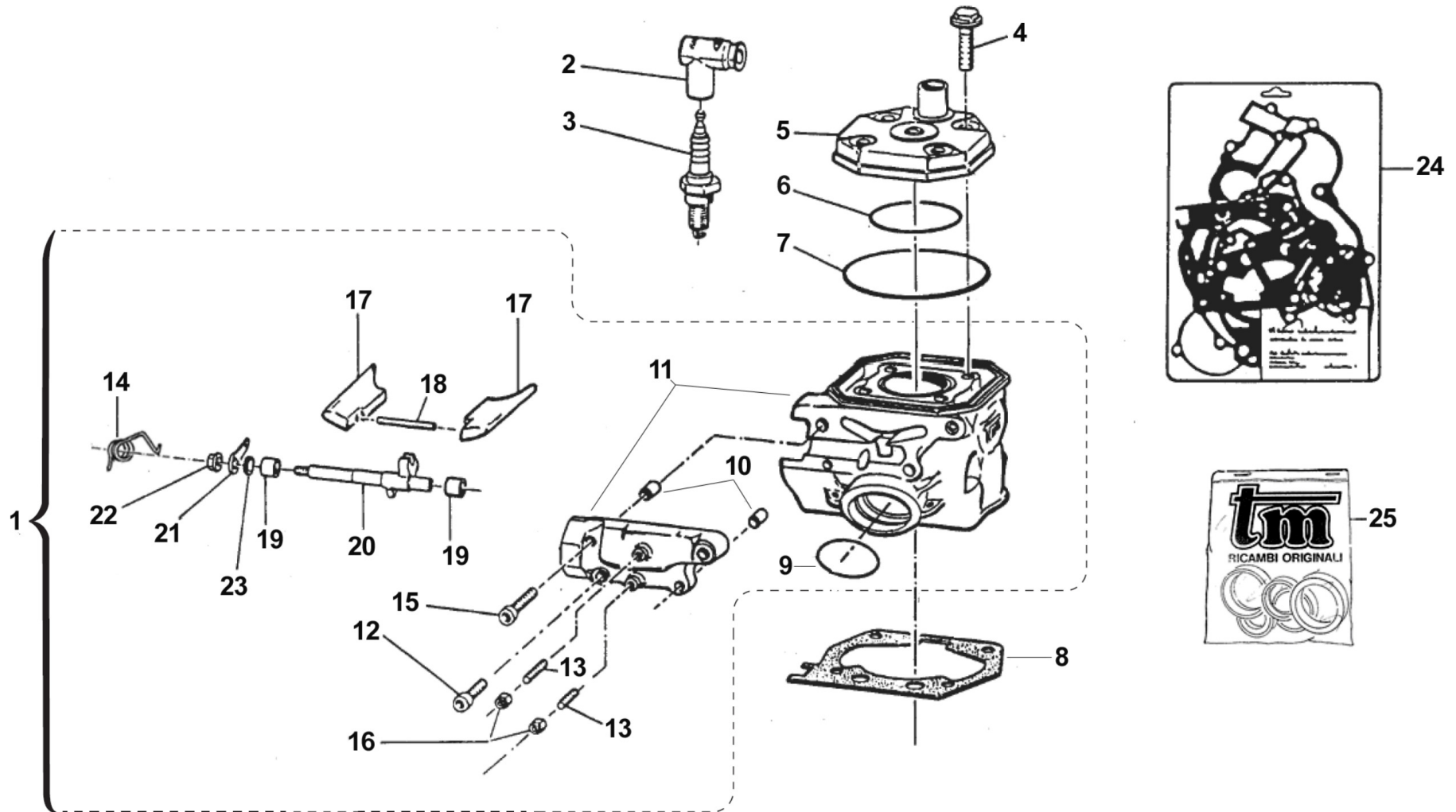
The illustrations in this manual are for reference only and may vary from the actual product.

All data are subject to modification without prior notice.



2T85MX21-M
MOTORE - ENGINE

| | |
|--|----|
| CILINDRO - CYLINDER..... | 4 |
| ALBERO MOTORE - PISTONE - CRANKSHAFT - PISTON..... | 7 |
| FRIZIONE - CLUTCH..... | 10 |
| CARTER FRIZIONE - CLUTCH CASE..... | 13 |
| BASAMENTO - PACCO LAMELLARE - CRANKCASE - REEDS BOX..... | 15 |
| CENTRIFUGA - SPIN..... | 17 |
| FORCHETTE CAMBIO - M/M - GEAR FORKS - KS..... | 20 |
| CAMBIO - GEAR BOX..... | 23 |





2T85MX21-M
MOTORE - ENGINE

CILINDRO
CYLINDER

| | | | | |
|----|----------|---|--|--------------------------------|
| 1 | 01093.15 | 1 | CILINDRO 85 CR/E 2015 CPL | CYLINDER 85cc MX M.15-> ASSY |
| 2 | 21017 | 1 | PIPETTA CANDELA NGK LB05EMH | CAP, NGK SPARK PLUG LB05EMH |
| 3 | 06028 | 1 | CANDELA NGK BR9ECMIX 85J | SPARK PLUG NGK BR9ECMIX 85cc J |
| 4 | 49335 | 4 | VITE TE/FLANG. 8X35 | BOLT 8X35 FLANGED |
| 5 | 02085.13 | 1 | TESTA 85 CR/E MOD. 13/-> | HEAD 85cc MX/E M. 13-> |
| 6 | 12005 | 1 | O RING TESTA 85cc PICC. 91/-> | O-RING, 56,08 X 1,87 |
| 6 | 12005.1 | 1 | O RING INTER.TESTA 85cc VITON | O-RING HEAD 85 VITON |
| 7 | 12011 | 1 | O RING CIL.80/85 ESTERNO 03 | O-RING, EXTERNAL CYL.80/85cc |
| 8 | 05519 | 1 | GUARN. B/C 80/85 M.91/-> 0,2 | GASKET, CYL 85cc M.91/07 0,20 |
| 8 | 05519.05 | 1 | GUARN. B/C 80/85 M.91/-> 0,05 | GASKET, CYL.85cc M.91-> 0,05 |
| 8 | 05520 | 1 | GUARN. B/C 80/85 M.91/-> 0,3 | GASKET, CYL 85cc M.91/-> 0,30 |
| 8 | 05521 | 1 | GUARN. B/C 80/85 M.91/-> 0,4 | GASKET, CYL 85cc M.91/07 0,40 |
| 8 | 05522 | 1 | GUARN. B/C 80/85 M.91/-> 0,5 | GASKET, CYL 85cc M.91/09 0,50 |
| 9 | 12015 | 1 | O RING SCAR.80cc91/02+BOC.CARB | O-RING, EXHAUST 80cc M.91/02 |
| 10 | 26041 | 2 | GRANO CENTRAGGIO D.7X8 F.5,2 | DOWEL PIN 7 x 8 Hole 5,2 |
| 11 | 01092.15 | 1 | CILINDRO 85 CR/E 2015 NUDO | CYLINDER 85cc MX/E M.15-> |
| 12 | 49474 | 2 | VITE TCEI 5X16 UNI 5931 | BOLT TCEI 5X16 |
| 13 | 49705 | 2 | GRANO 5X25 VALV.SC.125 SOPRA | GRUB SCREW 5 X 25 |
| 14 | 16057 | 1 | MOLLA ALBERINO VALV.85 M13 1.5 | SPRING EXH.VALVE SHAFT 85cc1,5 |
| 15 | 49476 | 2 | VITE TCEI 5X20 UNI 5931 | BOLT TCEI 5X20 |
| 16 | 49633 | 2 | DADO M 5 BASSO AUTOBLOCCANTE | NUT 5mm, LOW SELF-LOCKING |
| 17 | 22028.15 | 1 | VALVOLA GHIGL. 85 MOD. 2015 | POWER VALVE 85cc M.15-> |
| 18 | 19009 | 1 | RULLINO 4X34.8 V.SC.125 97/01 | PIN 4X34,8 EXH.VALVE 125 97/01 |
| 19 | 19045 | 2 | ASTUCCIO A RULLI HK 0810 | NEEDLE BUSH HK 0810 |
| 20 | 28026 | 1 | ALBERINO COM VAL. 125/250 99/11 | SHAFT P.VALVE 125/250 M. 99/05 |
| 21 | 28039 | 1 | PIASTRINO SUP.V 80/125 99/06 250 97/05 | UP PLATE, VALVE 80/125 99/06 |
| 22 | 49701 | 1 | DADO M 5 FLANGIATO VALV. | NUT 5mm, FLANGED VALV. |
| 23 | 04006 | 1 | PARAOLIO VALV.SCARIC.G.8x12x3 | OIL SEAL 8 x 12 x 3 |



2T85MX21-M
MOTORE - ENGINE

CILINDRO
CYLINDER

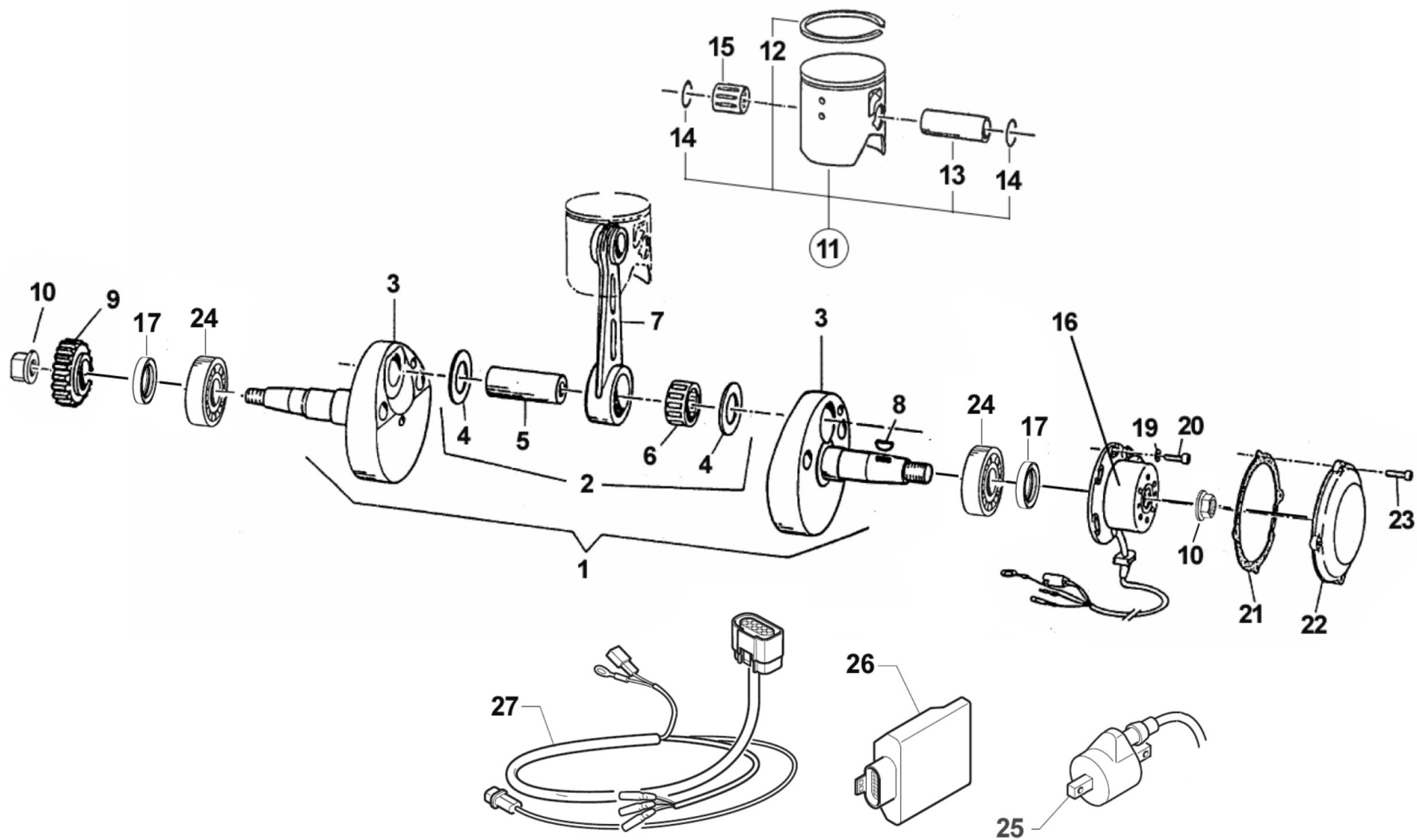
1

| | | | | |
|----|----------|---|-----------------------------------|---------------------------|
| 24 | 05616.07 | 1 | KIT GUARN. 85/100 MOD. 07/-> | GASKETS + OR 85/100 07/-> |
| 25 | 04037 | 1 | KIT PARAOLI 85/100 MOD. 2016/2018 | OIL SEAL 85 / 100 MY 18-> |



2T85MX21-M
MOTORE - ENGINE

ALBERO MOTORE - PISTONE
CRANKSHAFT - PISTON





2T85MX21-M
MOTORE - ENGINE

ALBERO MOTORE - PISTONE
CRANKSHAFT - PISTON

| | | | | |
|----|--------------|---|--|--|
| 1 | 18106.18 | 1 | ALBERO MOTORE 85/100 CPL M. 2018 | CRANKSHAFT ASSY 85/100 MY18 |
| 2 | 18104.13 | 1 | BIELLA 85/100cc MOD. 2013 CPL | CONROD ASSY 85cc RACING M.13-> |
| 3 | 18209.18 | 1 | COPPIA SEMIALBERI 85/100 MOD. 2018 | CRANKSHAFT SIDES 85/100 MY18 |
| 4 | 18023 | 2 | RONDELLA ARGENTATA D.18 | WASHER, SILVER ID.18 |
| 5 | 18022 | 1 | ASSE ACCOPP.18X48K3/K7/KV80/91 | CRANKPIN 18X48 K3-K7-KV 80/91 |
| 6 | 17003 | 1 | GABBIA ARGENTATA D. 18 IKO | SILVER CAGE D.18 |
| 7 | 18132 | 1 | BIELLA 85 MX/E PROT.2012 NUDA | CONROD 85/100 |
| 8 | 49010 | 1 | CHIAVETTA VOLANO 13x5x3 | WOODRUFF KEY |
| 9 | 40055 | 1 | PIGNONE COPPIA PRIM.Z15 80 M06 | PRIMARY DRIVE GEAR 15T 80 M.06 |
| 10 | 49056 | 2 | DADO ACCENS 100/TAG/KZ 125MX/E | NUT, IGNITION 100cc |
| 11 | 10174.87 | 1 | PISTONE 47.87 85cc M.2014 CPL | PISTON 47.87 85cc M.14-> |
| 11 | 10174.88 | 1 | PISTONE 47.88 85cc M.2014 CPL | PISTON 47.88 85cc M.14-> |
| 11 | 10174.89 | 1 | PISTONE 47.89 85cc M.2014 CPL | PISTON 47.89 85cc M.14-> |
| 12 | 11093 | 1 | SEGMENTO 47,95 CR 85cc M.91-> | PISTON RING D.47,95 85cc 91/13 |
| 13 | 09003 | 1 | SPINOTTO PISTONE 80/85 M.91/07 | PISTON PIN 80/85/100cc M.91/06 |
| 14 | 09006 | 2 | ANELLINO FERMA SPINOTTO 80/85/100 | CLIP, PISTON PIN 80/85/100cc |
| 15 | 19030 | 1 | GABBIA SPINOTTO 80 - 85 - 100 cc | TOP END B. 80cc 85cc 100cc |
| 16 | 15230 | 1 | GENERATORE KOK END 11 MX/E 12 | GENERATOR KOK END 11 MX/E 12-> |
| 16 | 50051 | 1 | ESTRATTORE ACCEN.KOK.2T 27X1 S | FLYWHEEL PULLER KOKUSAN 2S |
| 17 | 04035 | 2 | PARAOLIO 20x30x7 PTFE | OIL SEAL 20 x 30 x 7 PTFE |
| 19 | 49603 | 2 | RONDELLA M 6,4 X 12 X 1,6 | WASHER 6x12 |
| 20 | 49484 | 2 | VITE TCEI 6X20 | BOLT TCEI 6X20 |
| 21 | 05516 | 1 | GUARN. COP.ACC. 80/125 KOKUSAN | GASKET, KOK.IGNIT.COV. 80/125 |
| 22 | 30211 | 1 | COP. ACC. MX 125/144 06/11 E11 | COVER, IGNITION MX 80/125 2006 KOK. |
| 23 | 49477 | 4 | VITE TCEI 5X25 UNI 5931 | BOLT TCEI 5X25 |
| 24 | 03020 | 2 | CUSCINETTO RULLI NJ205ET2XC3 (BANCO 85/100 M.18) | BUSH CRANKSHAFT 85/100->18 NJ205ET2XC3 |
| 25 | 15206 | 1 | BOBINA KOKUSAN PIC. 2T IG7112 | COIL, KOKUSAN 2 STROKE IG7112 |
| 26 | 15209.085001 | 1 | CENTRALINA TMEES IG_MX 85_01 | ECU TMEES IG_MX 85_01 |

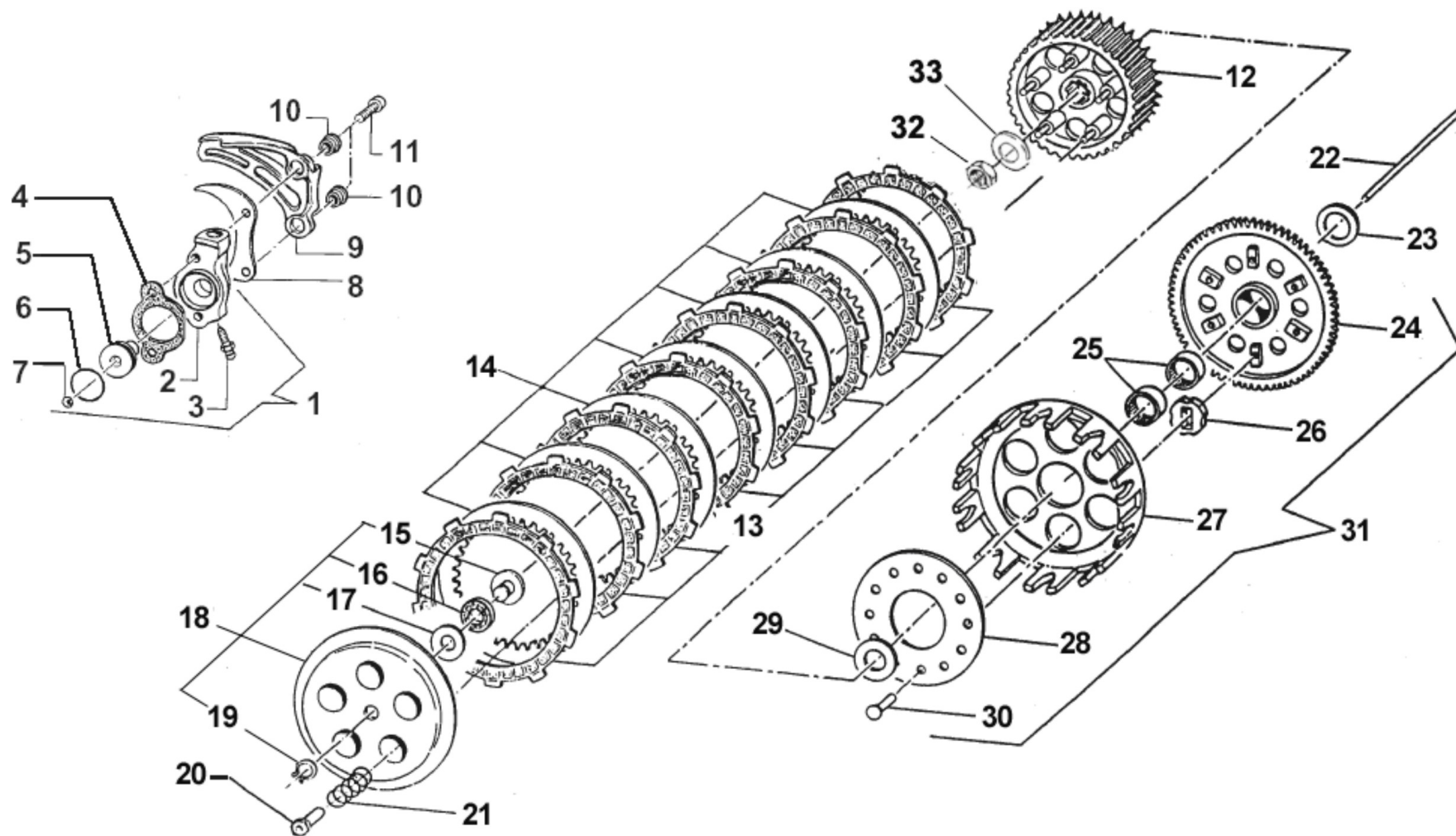


2T85MX21-M
MOTORE - ENGINE

ALBERO MOTORE - PISTONE
CRANKSHAFT - PISTON

2

| | | | | |
|----|-------|---|----------------------------|---------------------------|
| 27 | 68120 | 1 | CABLAGGIO CDI KOK 2T 08/10 | WIRE ECU KOKUSAN 2S 08/10 |
|----|-------|---|----------------------------|---------------------------|





2T85MX21-M
MOTORE - ENGINE

FRIZIONE
CLUTCH

| | | | | |
|----|----------|---|--------------------------------|--------------------------------|
| 1 | 30206 | 1 | COP. FRIZ/IDR 85/125 95/-> CPL | OUTPUT H.CLUTCH CYLINDER CPL. |
| 2 | 30205 | 1 | COP. FRIZ/IDR 80/125 95/11 NUD | OUTPUT H.CLUTCH CYLINDER |
| 3 | 35264 | 1 | VITE SPURGO OLIO FRIZ.IDR.6X1 | SCREW AIR BLED HYDRAUL.CLUTCH |
| 4 | 05509 | 1 | GUARN. POMPA FRIZ.IDR. 80/125 | GASKET, HYDRAULIC CLUTCH80/125 |
| 5 | 35125 | 1 | PISTONE POMPA FRIZ. 125 95/-> | PISTON, CLUTCH PUMP 125 95/04 |
| 6 | 12259 | 1 | O RING PISTONE FR.125/250VERDE | O-RING, CLUTCH PISTON 125/250 |
| 7 | 19052 | 1 | SFERA 8 X FRIZIONE 250 5/16" | BALL, IDR. CLUTCH PUMP |
| 8 | 40022 | 1 | PROTEZIONE ERGAL PIGNONE CAT. | PROTECTION, GEAR CHAIN ERGAL |
| 9 | 40029 | 1 | PROTEZIONE PIGNONE 09/-> PLAST | PROTECTION FRONT SPROCKET09/13 |
| 10 | 26212 | 2 | BOCCOLA PROT. PIGNONE 125 F.6 | COLLAR, SPROCKET 125cc H.6 |
| 11 | 49486 | 2 | VITE TCEI 6X30 UNI 5931 | BOLT TCEI 6X30 |
| 12 | 25099.14 | 1 | TAMBURELLO FRIZIONE 125 2014 | CLUTCH CENTRE 125cc M.14-> |
| 12 | 50124 | 1 | CHIAVE FRIZ. 85/125 + KART CPL | CLUTCH TOOL 85/125cc + KART |
| 13 | 35012 | 8 | DISCO FRIZ. GUARN.CR/E M.93-> | CLUTCH PLATE, FIBER MX/E 93/-> |
| 14 | 35019 | 7 | DISCO FRIZ. ACC. 1mm 99/05 | CLUTCH PLATE, STEEL 1mm 99/05 |
| 15 | 26001 | 1 | REGGISPINTA FRIZIONE | CLUTCH THRUST |
| 16 | 19020 | 1 | GABBIA A RULLI RAD. AXK 1024 | NEEDLE CAGE AXK 1024, RADIAL |
| 17 | 19021 | 1 | RONDELLA X GABBIA RULLI AS1024 | WASHER, NEEDLE CAGE AS 1024 |
| 18 | 35025 | 1 | PIATTO SPING.FRIZ 125/KART CPL | PLATE, CLUTCH PRESSURE ASSY |
| 19 | 49211 | 1 | SEEGER E10x1 ANELLO PIATT.REG. | CIRCLIP D.8,4 - EXTERNAL |
| 20 | 49058 | 5 | DADO FRIZIONE ERGAL 85CC 2014 | NUT, CLUTCH 85cc ERGAL 14-> |
| 21 | 16020 | 5 | MOLLA FRIZIONE 125 C/E 03/08BA | SPRING, CLUTCH 125 MX/E 03/-> |
| 22 | 35043 | 1 | ASTINA FRIZ. IDR. 125 M.99/10 | ROD, HYDR.CLUTCH 125 M. 99/04 |
| 23 | 48003 | 1 | SPESSORE COP.PRIM.30X20X2 | SPACER 30X20X2 PRIMARY GEAR |
| 24 | 40400 | 1 | COPPIA PRIM. 80/85 Z66 | PRIMARY GEAR 66T, 80/85 |
| 25 | 19013 | 2 | GABBIA A RULLI K 20X24X12 | NEEDLE CAGE 20 X 24 X 12 |
| 26 | 21005 | 6 | GOMMINO PARASTRAPPI FRIZIONE | RUBBER, CLUTCH BASKET |
| 27 | 25000 | 1 | CAMPANA FRIZ.125 M.91/96 99/13 | CLUTCH BASKET 125 91/96 99/05 |



2T85MX21-M
MOTORE - ENGINE

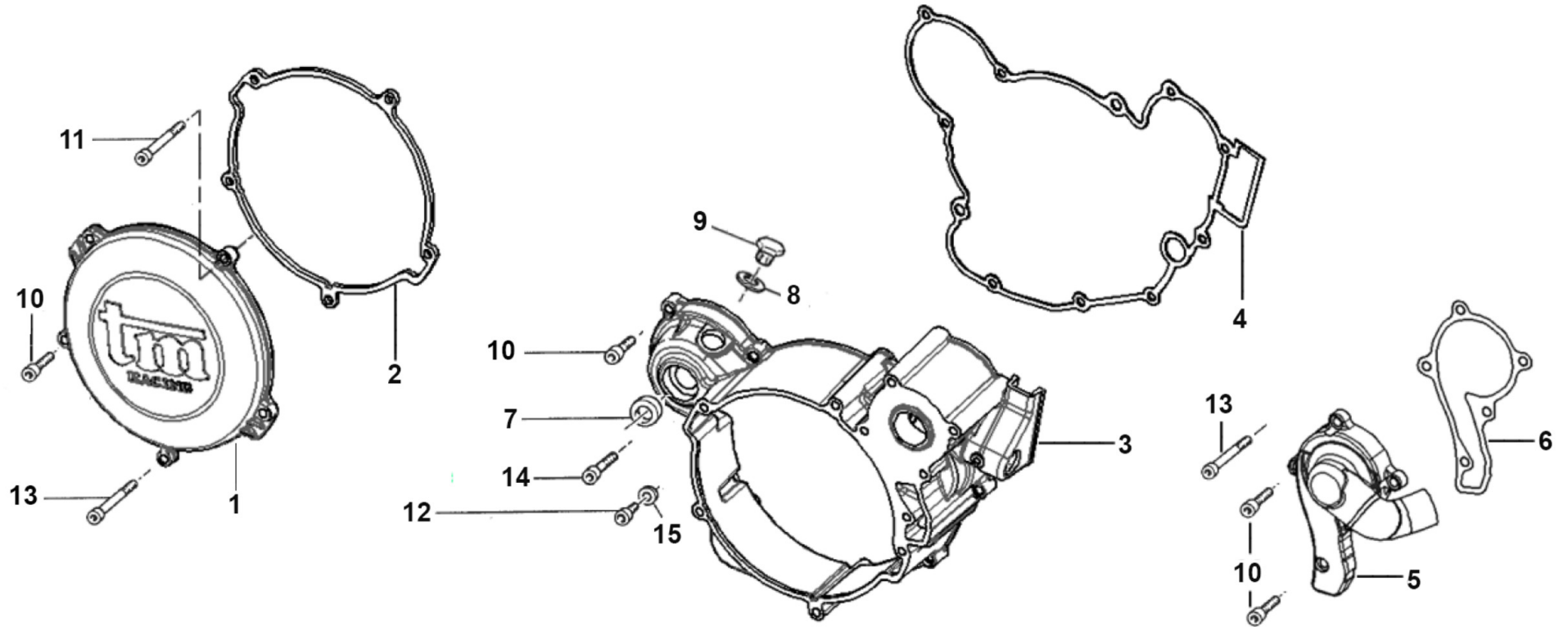
FRIZIONE
CLUTCH

| | | | | |
|----|-------|---|-------------------------------------|-----------------------------------|
| 28 | 35026 | 1 | DISCO BATTUTA GOMM. FRIZ.KZ10B | DISC STOP RUBBERS CLUTCH KZ10B |
| 29 | 48002 | 1 | SPESSORE COP.PRIM.30X18X3 | SPACER 30x18x3 |
| 30 | 49727 | 6 | VITE PARASTRAPPI K9 M7X1X12.5 | SCREW, M7X1X12,5 K9 ENGINE |
| 31 | 40404 | 1 | COPPIA PRIM. 80/85 Z66 CPL/CAM | PRIMARY GEAR 66T, 80/85 Comp. |
| 32 | 49052 | 1 | DADO TAMBURELLO FRIZIONE | NUT, CLUTCH CENTER |
| 33 | 49127 | 1 | MOLLA A TAZZA DIN 2093 28X14,2X1,25 | DISC SPRING DIN 2093 28x14,2x1,25 |



2T85MX21-M
MOTORE - ENGINE

CARTER FRIZIONE
CLUTCH CASE





2T85MX21-M
MOTORE - ENGINE

CARTER FRIZIONE
CLUTCH CASE

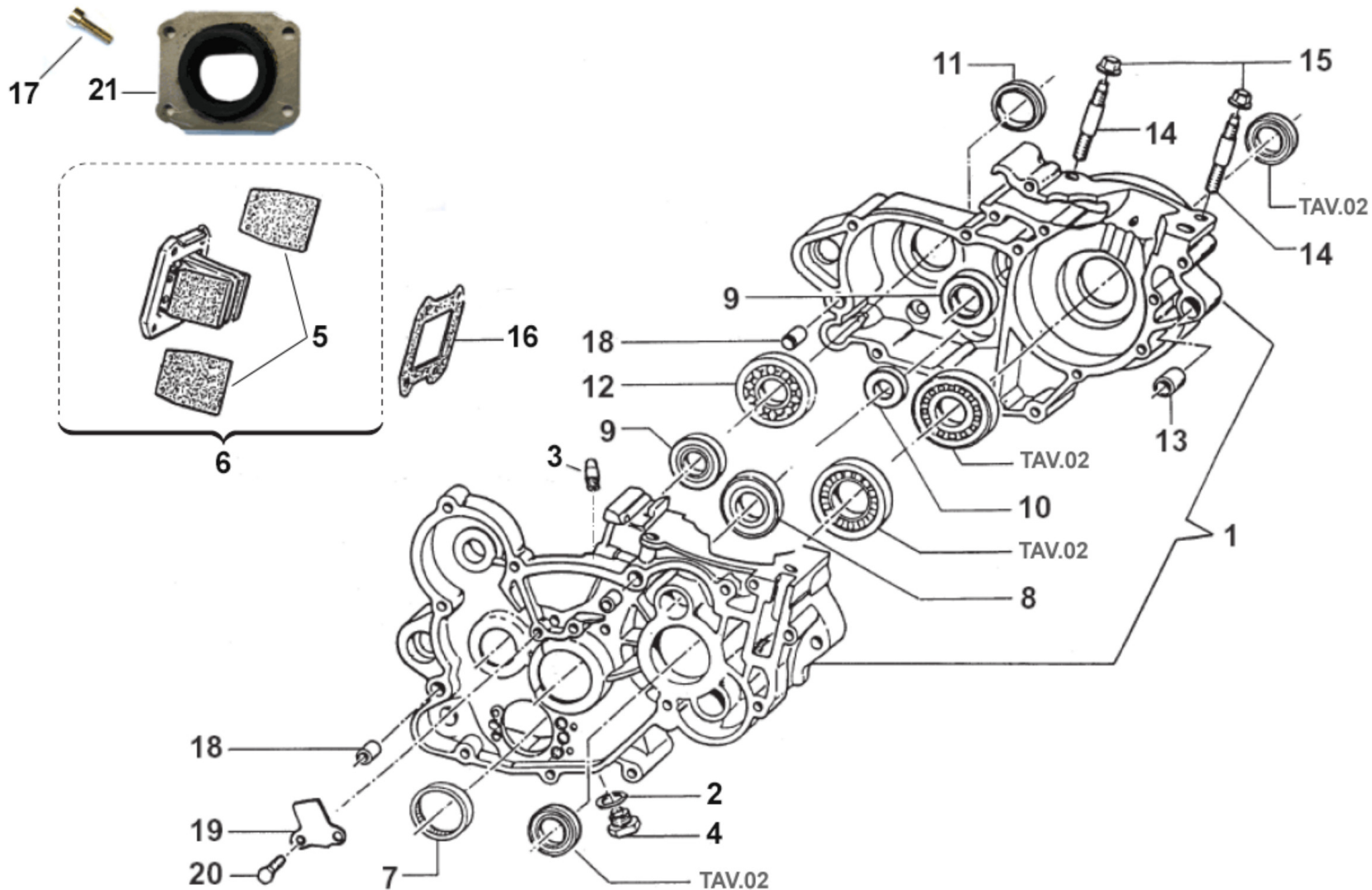
4

| | | | | |
|----|----------|---|---------------------------------|--------------------------------|
| 1 | 30187 | 1 | COPERCHIETTO FRIZ. 125 M.2006 | COVER, CLUTCH, EXT. 125 06/-> |
| 2 | 05526 | 1 | GUARN. COP.FRIZ. EST.125 06/-> | GASKET, EXT.CLUTCH COVER 125/6 |
| 3 | 30186 | 1 | CARTER FRIZIONE 125 M.06/11 | COVER, INT CLUTCH 125 M.06/11 |
| 4 | 05527 | 1 | GUARN. COP.FRIZ. INT.125 06/-> | GASKET, CLUTCH CASE 125 06/-> |
| 5 | 30194.06 | 1 | COPERCHIO POMPA H2O CR/E 06/-> | WATER PUMP COVER MX/E M.2006 |
| 6 | 05528 | 1 | GUARN. POMPA ACQUA 125 2006 | GASKET WATER PUMP 125cc 2006 |
| 7 | 04005 | 1 | PARAOLIO ALBERINO M/M 15x24x7 | OIL SEAL 15 x 24 x 7 |
| 8 | 49103 | 1 | RONDELLA 14X20X1,5 ALLUMINIO | WASHER, 14 X 20 X 1.5 ALUMINUM |
| 9 | 49300 | 1 | TAPPO CARICO OLIO | OIL PLUG, FILL |
| 10 | 49476 | 9 | VITE TCEI 5X20 UNI 5931 | BOLT TCEI 5X20 |
| 11 | 49594 | 2 | VITE TCEI 5X85 UNI 5931 | SCREW TCEI 5X85 |
| 12 | 49480 | 1 | VITE TCEI 6X10 UNI 5931 | BOLT TCEI 6X10 |
| 13 | 49595 | 3 | VITE TCEI 5X80 | BOLT TCEI 5X80 |
| 14 | 49477 | 1 | VITE TCEI 5X25 UNI 5931 | BOLT TCEI 5X25 |
| 15 | 49104 | 1 | RONDELLA 6 x 10 x 1,5 ALLUMINIO | WASHER 6 x 10 x 1.5 ALUMINUM |



2T85MX21-M
MOTORE - ENGINE

BASAMENTO - PACCO LAMELLARE
CRANKCASE - REEDS BOX



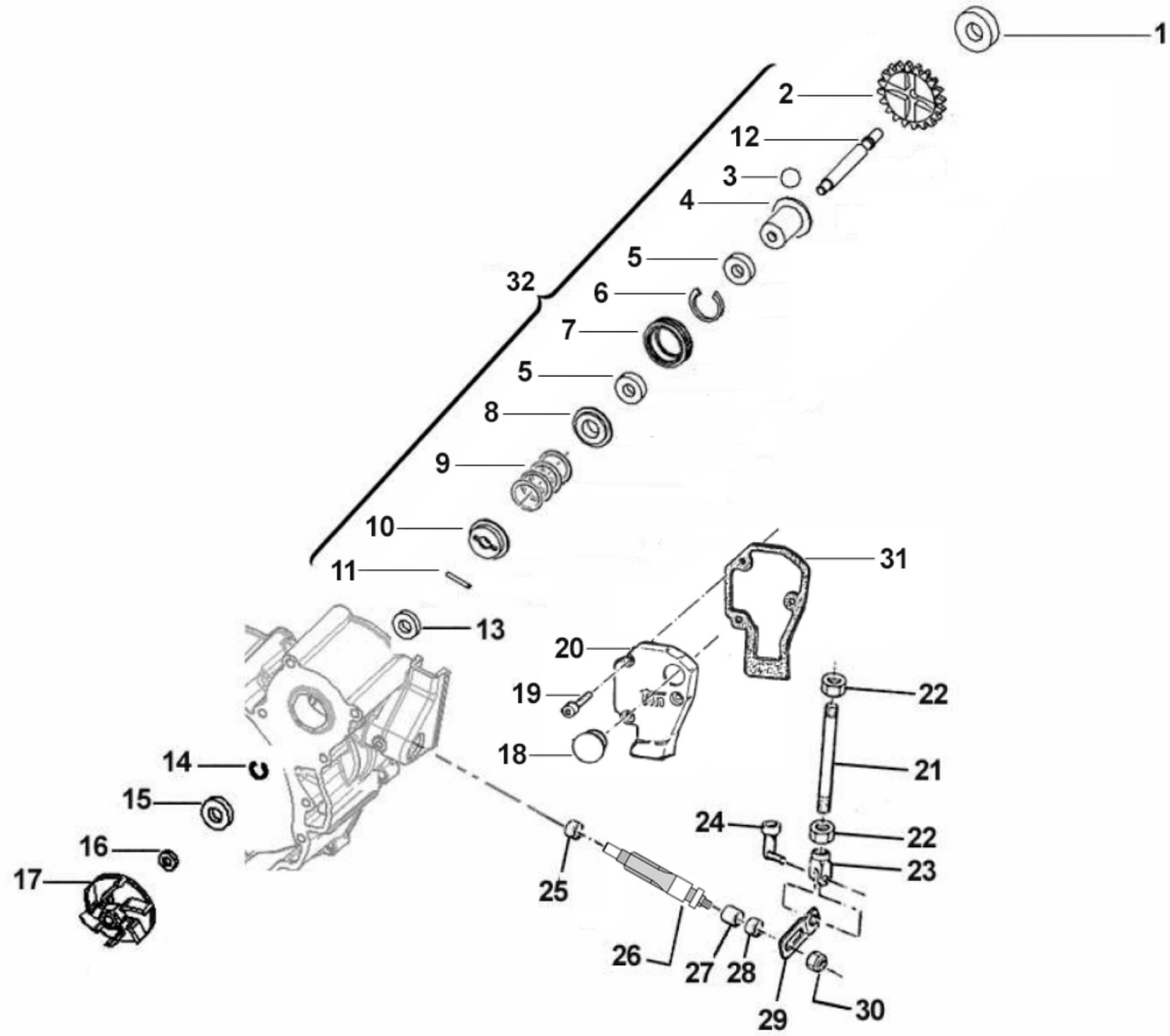


2T85MX21-M
MOTORE - ENGINE

BASAMENTO - PACCO LAMELLARE
CRANKCASE - REEDS BOX

5

| | | | | |
|----|----------|---|---|--------------------------------|
| 1 | 30025.16 | 1 | BASAMENTO MOTORE 85cc MY 2016/2017CUSC. 03004x2 PARAOLI 04035x2 | CRANKCASE ENGINE 85cc M16-> |
| 2 | 49103 | 1 | RONDELLA 14X20X1,5 ALLUMINIO | WASHER, 14 X 20 X 1.5 ALUMINUM |
| 3 | 49009 | 1 | RACCORDO SFIATO OLIO MX/E F.4 | JOINT, OIL BREATHER |
| 4 | 49301 | 1 | TAPPO OLIO C/CALAM. 2T | OIL PLUG WITH MAGNET |
| 5 | 20075 | 1 | LAMELLE V-FORCE3 85/100 08/-> | REEDS, V-FORCE3 85/100 08/-> |
| 6 | 20084 | 1 | PACCO LAMELLARE 85/100cc 2008 VF3 | REEDS BOX 85/100 2S V-FORCE 3 |
| 7 | 19041 | 1 | ASTUCCIO A RULLI DHK 35/12 | BUSH NEEDLE CAGE DHK 35/12 |
| 8 | 03011 | 1 | CUSCINETTO ALBERO PRIM. 6204 Z C3 | BUSH, GEAR MAINSHAFT |
| 9 | 03009 | 2 | CUSCINETTO 6202 Z C3 RIVETT. | BUSH, 6202 Z C3 |
| 10 | 03012 | 1 | CUSCINETTO DESMODROMICO 6001 2RS | BUSH, 6001 2RS GEAR DRUM |
| 11 | 04003 | 1 | PARAOLIO PIGN.CATENA (26x37x7) | OIL SEAL 26 x 37 x 7 |
| 12 | 03010 | 1 | CUSCINETTO 6204 C3 PIG.CATENA | BUSH, COUNTERSHAFT / SPROCKET |
| 13 | 26043 | 1 | GRANO CARTER ANT. 14 X 14 | GRUB SCREW 14X14 |
| 14 | 49020 | 4 | PRIGIONIERO CIL.48 mm 80/125 | STUD CYL.48mm 80/125cc |
| 15 | 49640 | 4 | DADO M 8 FLANGIATO CHIAVE 12 | NUT 8mm, FLANGE |
| 16 | 05262 | 1 | GUARN. PACCO LAMELLE 80/85 | GASKET, REEDS VALVE 80/85cc |
| 17 | 49484 | 4 | VITE TCEI 6X20 | BOLT TCEI 6X20 |
| 18 | 26044 | 3 | GRANO CENTRAGGIO MOTOR.10X13,6 | GRUB SCREW 10X13,6 |
| 19 | 26023 | 1 | PIASTRINO CONVOGLIATORE OLIO | PLATE, OIL |
| 20 | 49440 | 2 | VITE TE 6X14 | BOLT TE 6X14 |
| 21 | 13095 | 1 | COLLETTORE ASP.80/85'13 KEI.28 | INLET MANIFOLD 85 13-> KEIH.28 |





2T85MX21-M
MOTORE - ENGINE

CENTRIFUGA
SPIN

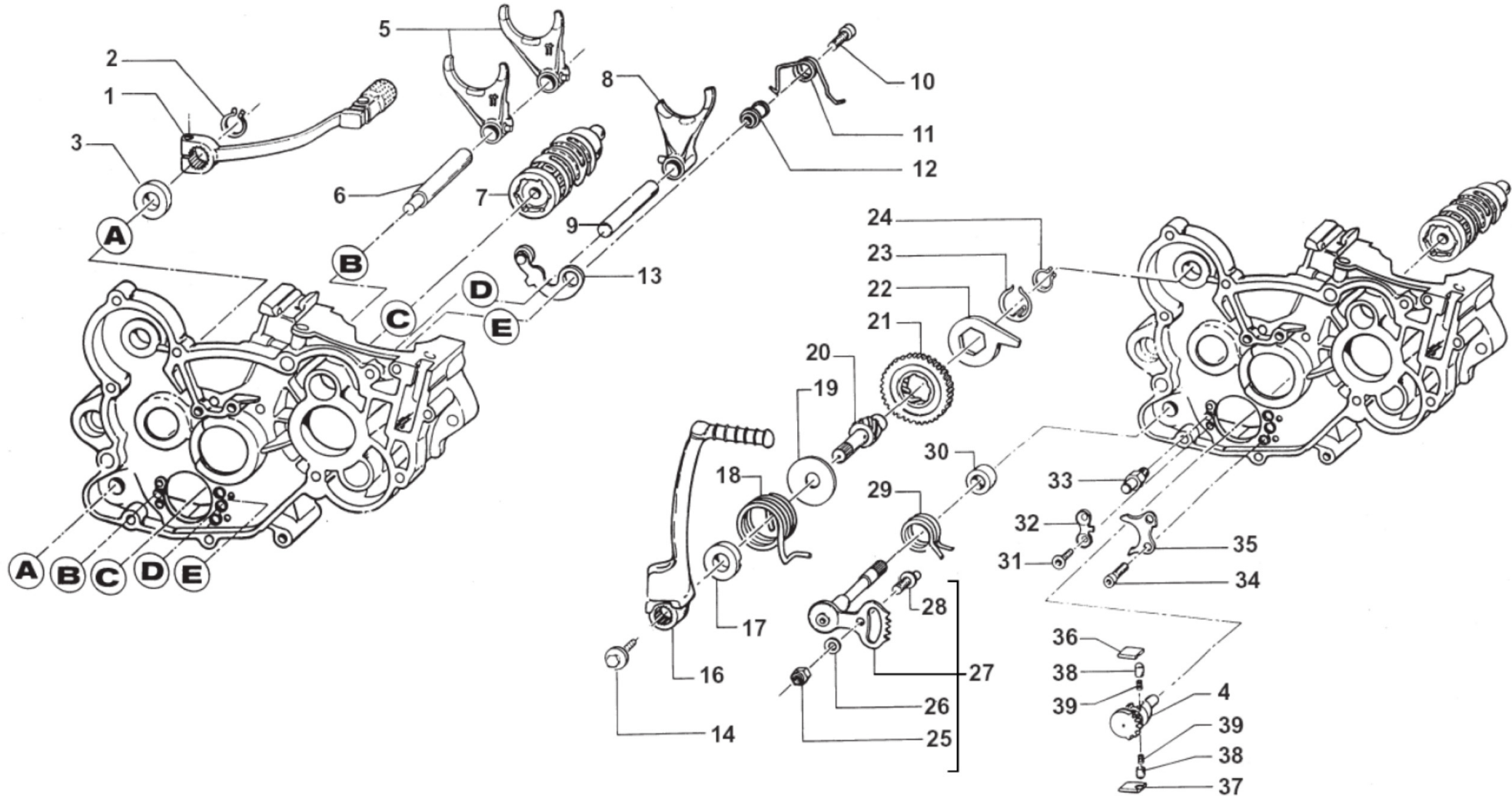
| | | | | |
|----|----------|---|--------------------------------|--------------------------------|
| 1 | 03025 | 1 | CUSCINETTO 626 C3 POMPA H2O 06 | BUSH, WATER PUMP 626 C3 |
| 2 | 40056 | 1 | INGR. VALVOLA CENTRIF. 80 2006 | EXHAUST VALVE GEAR 80cc M.06 |
| 3 | 19054 | 4 | SFERA D.12 | BALL DIAM. 12 mm |
| 4 | 40065 | 1 | BUSSOLA PER CENTRIFUGA 10/11 | SPIN BUSH 10/11 |
| 5 | 03028 | 2 | CUSCINETTO 61901 MODIFIC 10/11 | BUSH, 61901 |
| 6 | 49263 | 1 | SEEGER I 24 | SEEGER I 24 |
| 7 | 40059 | 1 | RUOTA DENTATA CENTRIFUGA 10/11 | GEAR SPIN WHEEL 10/11 |
| 8 | 48031 | 1 | RONDELLA GUIDA MOLLA ANT.2010 | WASHER, SPRING, FRONT |
| 9 | 16056 | 1 | MOLLA CENTRIFUGA JUNIOR 2013 | SPRING, SPIN EXHAUST VALVE J13 |
| 10 | 48024 | 1 | RONDELLA GUIDA MOLLA PST.06(2) | WASHER, SPRING, REAR |
| 11 | F19503 | 1 | RULLINO D.3 X 13.8 | PIN D.3 X 13,8 F.S. |
| 12 | 28004 | 1 | ALBERINO POMPA E CENTR.2006 | SHAFT, WATERPUMP 2006 |
| 13 | 03014 | 1 | CUSCINETTO 608 ZC3 POMPA SCHER | BUSH, WATER PUMP 608 Z C3 |
| 14 | 49215 | 1 | SEEGER I22 POMPA ACQUA | CIRCLIP D.22 WATER PUMP |
| 15 | 04017 | 1 | PARAOLIO CENTRIFUGA 06 +MF1TAG | OIL SEAL 8 X 22 X 7 TC |
| 16 | 49689 | 1 | RONDELLA 6 X 12 SP. 1.2 | WASHER 6x12 sp. 1,2 |
| 17 | 28009 | 1 | GIRANTE POMPA ACQUA 2006/08 | IMPELLER, WATER PUMP M.06/-> |
| 18 | 21009 | 1 | TAPPO GOMMA COPERCHIO VALV.SC. | RUBBER, COVER |
| 19 | 49474 | 3 | VITE TCEI 5X16 UNI 5931 | BOLT TCEI 5X16 |
| 20 | 30201.02 | 1 | COPERCHIETTO LEV.VALV.C/E80 02 | EXT. VALVES COVER MX/END.80 02 |
| 21 | 28029 | 1 | ASTINA VALVOLA 125 CR/E 93/05 | ROD, POWER VALVE 125 M. 93/05 |
| 22 | 49630 | 2 | DADO M 4 (BASSO) | NUT 4mm, LOW |
| 23 | 49041 | 2 | FORCHETTINA M4 X VALVOLA SC. | FORK, POWER VALVE ROD |
| 24 | 49042 | 2 | MOLLA BLOCCA FORCHETTINA M4 | SPRING, POWER VALVE FORK M4 |
| 25 | 19048 | 1 | ASTUCCIO A RULLI HK 0608 | NEEDLE CAGE HK 0608 |
| 26 | 28005 | 1 | ALBERINO COM. VALVOLA SC.06/10 | SHAFT, INLET VALVE 2006 |
| 27 | 19044 | 1 | GABBIA A RULLI FRENO POST. | NEEDLE BUSH REAR BRAKE PEDAL |
| 28 | F04354 | 1 | PARAOLIO G 12X16X3 POMPA OLIO | OIL SEAL G 12/13/3 OIL PUMP |



2T85MX21-M
MOTORE - ENGINE

CENTRIFUGA
SPIN

| | | | | |
|----|----------|---|--------------------------------|--------------------------------|
| 29 | 28043 | 1 | PIASTRINO INF. VALV. 125/2006 | VALVE LOW PLATE 125/2006 |
| 30 | 49701 | 1 | DADO M 5 FLANGIATO VALV. | NUT 5mm, FLANGED VALV. |
| 31 | 05514.1 | 1 | GUARN. COP.LEVERAG.80/85 M.02 | GASKET, POWER VALVE 85 M.02/09 |
| 32 | 28004.85 | 1 | ALBERINO POMP.CENTR 85 CPL 13> | SHAFT, WATERPUMP 85 ASSY 13-> |





2T85MX21-M
MOTORE - ENGINE

FORCHETTE CAMBIO - M/M
GEAR FORKS - KS

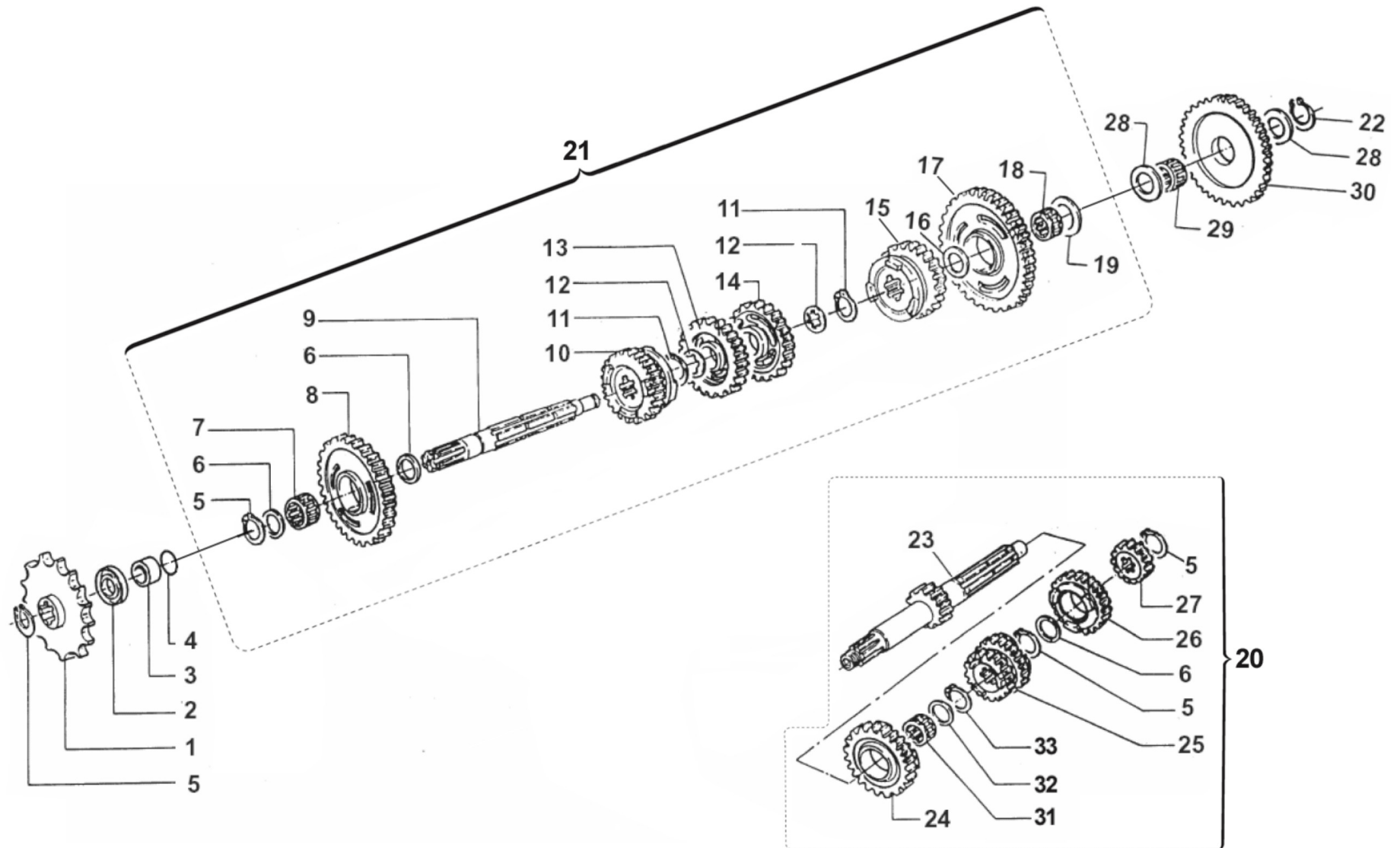
| | | | | |
|----|----------|---|---|--|
| 1 | 43048 | 1 | LEVA CAMBIO 2014 + 12MM (253) 85/125/144 2T 250Fi | GEAR LEVER 2014 +12mm |
| 2 | 49212 | 1 | SEEGER E12 LEVA CAMBIO | CIRCLIP D.12 - EXTERNAL |
| 3 | 04004 | 1 | PARAOLIO POMPA H2O-LEVA CAMBIO | OIL SEAL 12 x 22 x 5 |
| 4 | 40310 | 1 | INGRANAGGIO PORTACRICCHETTI | DRUM SHIFTER GEAR |
| 5 | F33314 | 2 | FORCHETTA A/S 125/250/300 CROM | SHIFT FORK SECONDARY 125/250CR |
| 6 | 33256 | 1 | PERNO FORCH.ALB.SEC. 250 / 125.99 | AXEL, COUNTERSHAFT FORK 250cc |
| 7 | 33004 | 1 | ALBERO DESM.125 INTEGR. 6M CPL 125/144 6 M. CPL DI F26476 | GEAR DRUM 125 6SP. 125/144 ASSY F26476 |
| 8 | 33016 | 1 | FORCHETTA ALB.PRIM.125 PRT.CRM | SHIFT FORK MAINSHAFT 125 CROM. |
| 9 | 33255 | 1 | PERNO FORCH.ALB. PRIM.250 / 125.99 | AXEL, MAINSHAFT FORK 250cc |
| 10 | 49485 | 1 | VITE TCEI 6X25 UNI 5931 | BOLT TCEI 6x25 |
| 11 | 16011 | 1 | MOLLA BLOCCAMARCE | SPRING, STOP GEAR |
| 12 | 26007 | 1 | DISTANZIALE MOLLA BLOCCAMARCE | SPACER, STOP GEAR SPRING |
| 13 | 26063.12 | 1 | PIASTRINO BLOCCAMARCE 2012 CPL | PLATE STOP GEAR ASSY M.12-> |
| 14 | 49368 | 1 | VITE TE F/R 6X10 LEVA M/M | BOLT 6X10 (Kich Starter) |
| 16 | 43038 | 1 | LEVA M/M 80/125 M. 99/-> | LEVER, KICK STARTER 125 99/-> |
| 17 | 26005 | 1 | DISTANZIALE MOLLA M/M | SPACER, KICK STARTER SPRING |
| 18 | 16008.85 | 1 | MOLLA M/M 85/100c | SPRING, KICK STARTER 85 / 100 cc |
| 19 | 48008 | 1 | RONDELLA ALBERO MESSA IN MOTO | WASHER, KICK STARTER SHAFT |
| 20 | 28051 | 1 | ALBERO MESSA IN MOTO 125/144 96/18 | SHAFT, KICK STARTER 125 96/05 |
| 21 | 40350 | 1 | INGRANAGGIO SCORREVOLE M/M 125 / 144 | SLIDING GEAR, KICK STARTER 125 |
| 22 | 26254 | 1 | LEVA BATTUTA M/M 125/250 96/-> | STOPPER, KICK STARTER |
| 23 | 16006 | 1 | MOLLA X INGRANAGGIO M/M | SPRING, KICKSTART SLIDING GEAR |
| 24 | 49214 | 1 | SEEGER E15 INGRANAGGIO M/M | CIRCLIP GEAR K.S. 15mm |
| 25 | 49638 | 1 | DADO M 6 ALTO AUTOBLOCCANTE | NUT 6mm, HIGHT SELF-LOCKING |
| 26 | 49603 | 1 | RONDELLA M 6,4 X 12 X 1,6 | WASHER 6x12 |
| 27 | 28100 | 1 | ALBERO COMANDO ING. P.TACRIC. | SHAFT, GEARSHIFT |
| 28 | 26050 | 1 | BATTUTA ECCENTRICA | ADJUSTER SELECTOR SHAFT |
| 29 | 16009 | 1 | MOLLA RITORNO LEVA CAMBIO 32CR | SPRING, RETURN GEAR LEVER 3,2 |



2T85MX21-M
MOTORE - ENGINE

FORCHETTE CAMBIO - M/M
GEAR FORKS - KS

| | | | | |
|----|-------|---|--------------------------------|----------------------------------|
| 30 | 26006 | 1 | DISTANZIALE MOLLA LEVA CAMBIO | SPACER, GEAR LEVER SPRING |
| 31 | 49405 | 2 | VITE TSEI 6X20 UMB.5933 10.9 | BOLT TSEI 6x20 U.5933 10.9 |
| 32 | 26022 | 1 | PIASTRINO FINE CORSA | PLATE END STROKE GEAR LEVER |
| 33 | 26051 | 1 | BATTUTA FISSA LEVA CAMBIO INT. | PLATE INT. END STROKE GEAR LEVER |
| 34 | 49483 | 2 | VITE TCEI 6X16 UNI 5931 | BOLT TCEI 6X16 |
| 35 | 26021 | 1 | PIASTRINO RIENTRO CRICCHETTI | PLATE, RATCHET |
| 36 | 26060 | 1 | CRICCHETTO CAMBIO SUPERIORE | RATCHET UP, GEAR |
| 37 | 26061 | 1 | CRICCHETTO CAMBIO INFERIORE | RATCHET DOWN, GEAR |
| 38 | 26062 | 2 | PUNTALE PER CRICCHETTO CAMBIO | PIN, RATCHET GEAR |
| 39 | 16012 | 2 | MOLLA PER PUNTALE | SPRING, GEARBOX PIN |





2T85MX21-M
MOTORE - ENGINE

CAMBIO
GEAR BOX

| | | | | | |
|----|----------|---|-----------|--|--------------------------------|
| 1 | 40013 | 1 | MX SENIOR | PIGNONE CAT.Z13 PASSO 5/8X1/4 | SPROCKET 13T, DRIVE 5/8X1/4 |
| 2 | 04003 | 1 | | PARAOLIO PIGN.CATENA (26x37x7) | OIL SEAL 26 x 37 x 7 |
| 3 | 26002.1 | 1 | | DISTANZIALE PIGNONE (MOTO) | SPACER, MOTORCYCLE GEAR |
| 4 | 12019 | 1 | | O RING PIGNONE CATENA | O-RING, DRIVE GEAR 2075 |
| 5 | 49216 | 4 | | SEEGER E20 PIGN.-CAMBIO-COPPIA | CIRCLIP D.20 - EXTERNAL |
| 6 | 48013 | 3 | | RASAMENTO A/S 27X20X0,7 | SPACER, 27x20x0,7 |
| 7 | 19012 | 1 | | GABBIA A RULLI K 20X24X10 | BUSH NEEDLE CAGE 20 X 24 X 10 |
| 8 | 40480 | 1 | | INGR A.S. 2a Z 29 | GEAR, 2ND (29T) COUNTERSHAFT |
| 9 | 40460 | 1 | | ALBERO SECONDARIO | COUNTERSHAFT |
| 10 | 40520 | 1 | | INGR A.S. 6a Z 23 | GEAR, 6TH (23T) COUNTERSHAFT |
| 11 | 49217 | 2 | | SEEGER E22 ANELLO ALB/S | CIRCLIP D.22 - COUNTERSHAFT |
| 12 | 48011 | 2 | | RASAMENTO DENT.A/S 27X22X0,75 | SPACER, 27x22x0,75 |
| 13 | 40500 | 1 | | INGR A.S. 4a Z 28 | GEAR, 4TH (28T) COUNTERSHAFT |
| 14 | 40490 | 1 | | INGR A.S. 3a Z 27 | GEAR, 3RD (27T) COUNTERSHAFT |
| 15 | 40510 | 1 | | INGR A.S. 5a Z 24 CR/E 90 | GEAR, 5TH (24T) COUNTERSHAFT |
| 16 | 48012 | 1 | | RASAMENTO A/S M/M SPESS.0,5 | SPACER, 26x17x0,5 |
| 17 | 40707 | 1 | | INGR A.S. 1a Z 32 CR/90 | GEAR, 1ST(32T)COUNTERSH. MX/90 |
| 18 | 19011 | 1 | | GABBIA A RULLI K 17X21X10 | BUSH CAGE 17 X 21 X 10 |
| 19 | 48010 | 1 | | RASAMENTO ALB/S.28X15X0,5 INGI | SPACER, 28x15x0,5 |
| 20 | 40003 | 1 | | ALBERO PRIMARIO CPL 85/100 CC J/MX | PRIMARY ASHFT ASSY 85/100 |
| 21 | 40004 | 1 | | ALBERO SECONDARIO CPL 85/100 CC J/MX | SECONDARY SHAFT ASSY 85/100 |
| 22 | 49214 | 1 | | SEEGER E15 INGRANAGGIO M/M | CIRCLIP GEAR K.S. 15mm |
| 23 | 40713.85 | 1 | | ALBERO PRIMARIO Z 14 85CC RINF.CON SEDE SEEGER | PRIMA SHAFT 14T 85/100 |
| 24 | 40440 | 1 | | INGR. A.P. 5a Z 22 K9B/C 10 CR/E90 | GEAR, 5TH (22T) MAINSHAFT |
| 25 | 40432 | 1 | | INGR A.P. 3/4a Z 19/23 | GEAR, 3/4TH (19-23T) MAINSHAFT |
| 26 | 40451 | 1 | | INGR A.P. 6a Z 23 | GEAR, 6TH (23T) MAINSHAFT |
| 27 | 40423 | 1 | | INGR A.P. 2a Z 17 | GEAR, 2ND (17T) MAINSHAFT |
| 28 | 48004 | 1 | | SPESSORE INGRANAGGIO M/M | SPACER, K.STARTER GEAR |



2T85MX21-M
MOTORE - ENGINE

CAMBIO
GEAR BOX

| | | | | |
|----|-------|---|----------------------------------|--------------------------------|
| 29 | 19010 | 1 | GABBIA A RULLI K 15X19X10 | BUSH NEEDLE CAGE 15 X 19 X 10 |
| 30 | 40351 | 1 | INGRANAGGIO LIBERO M/M 125 / 144 | GEAR, KICK STARTER 125 |
| 31 | 19071 | 1 | GABBIA A 20X24X10 IN DUE META' | NEEDLE CAGE 20X24X10 TWO PIEC. |
| 32 | 48041 | 1 | RASAMENTO A/P 27.5X21X1 KZ10B | SPACER, MAINSHAFT 27,5X21X1 KZ |
| 33 | 49222 | 1 | SEEGER E 21 mm | CIRCLIP D.21 - EXTERNAL |